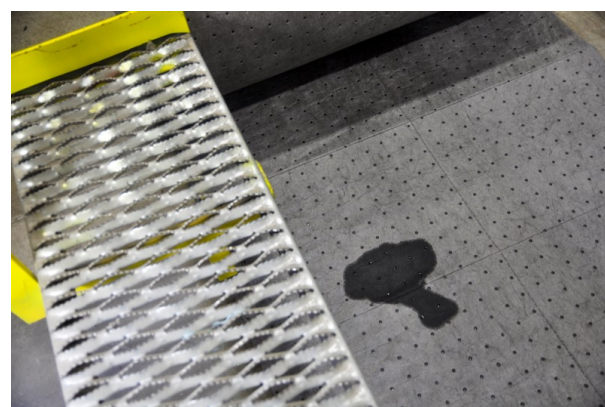


30"x150' Universal Single-Ply Heavy Essentials Sorbent Roll

Features:

- All-purpose sorbent
- Heavyweight product provides additional absorbency and strength
- Perforated for flexibility and efficiency
- Great wicking and performance for all of your leaks, drips and spills.
- Dimple bond pattern increases strength and durability



Specifications:

| | |
|----------------------------|------------------------------------|
| Brand | Essentials |
| Product Category | Sorbent Pads and Rolls |
| Product Type | Rolls |
| Liquids Absorbed | Universal |
| Grade/Weight | Heavy |
| Color/Colour | Gray |
| Package Count | 1 |
| Product Width (in) | 30 |
| Product Length (ft) | 150 |
| Construction | Single-Ply Meltblown Polypropylene |
| Bonded | Yes |
| Perforations | Yes |
| Absorbency (Gal) | 36 |
| Packaging Type | Bag |
| UPC | 810042420083 |

Logistics:

| | |
|-----------------------------|------------------|
| Shipping Height (in) | 30 |
| Shipping Length (in) | 16 |
| Shipping Width (in) | 16 |
| Cube | 4.44444444444444 |
| Layers Per Pallet | 3 |
| Cases Per Layer | 8 |
| Pallet Count | 24 |
| NMFC | 149265-4 |
| Safety Data Sheet | Yes |